

~~CONFIDENTIAL~~

Unique Document # SAB2000500100

LARGE-SCALE INTEGRATED DESTRUCT SYSTEM (u)

George T. Schmitz  
C. Art Campos  
Jack R. Anthony  
Thomas O. Meyer

FEBRUARY 1991

for  
Sandia National Laboratories  
Albuquerque, New Mexico  
P. O. Nos. 52-2235 and 37-9619

| DEPARTMENT OF ENERGY DECLASSIFICATION REVIEW  |  |
|---|--|
| 1ST REVIEWER DATE: <u>1-16-93</u>   | DETERMINATION [CIRCLE NUMBER(S)]                           |
| AUTHORITY: <input type="checkbox"/> AOC <input type="checkbox"/> DOC <input type="checkbox"/> ADD | <input checked="" type="radio"/> 1 CLASSIFICATION RETAINED |
| NAME: <u>C. P. DEMAS</u>  | <input type="radio"/> 2 CLASSIFICATION CHANGED TO: _____   |
| 2ND REVIEWER DATE: <u>2-25-94</u>   | <input type="radio"/> 3 CONTAINS NO DOE CLASSIFIED INFO    |
| AUTHORITY: ADD <input type="checkbox"/>   | <input type="radio"/> 4 COORDINATE WITH: _____             |
| NAME: <u>D. R. L.</u>   | <input type="radio"/> 5 CLASSIFICATION CANCELLED           |
|   | <input type="radio"/> 6 CLASSIFIED INFO BRACKETED          |

OTHER: Pages 2 thru 34 are denied in their entirety.

RESTRICTED DATA

This document contains Restricted Data as defined in the Atomic Energy Act of 1954. Unauthorized disclosure is subject to Administrative and Criminal Sanctions.

~~CONFIDENTIAL~~

LARGE-SCALE INTEGRATED DESTRUCT SYSTEM (u)

George T. Schmitz  
C. Art Campos  
Jack R. Anthony  
Thomas O. Meyer

FEBRUARY 1991

for  
Sandia National Laboratories  
Albuquerque, New Mexico  
P. O. Nos. 52-2235 and 37-9619

|  |  |
|--|--|
| DEPARTMENT OF ENERGY DECLASSIFICATION REVIEW |  |
| 1ST REVIEW-DATE: <u>9-16-93</u>              | DETERMINATION (CIRCLE NUMBER(S))                                 |
| AUTHORITY: <u>DAOC DAAC ADD</u>              | <input checked="" type="radio"/> 1. CLASSIFICATION RETAINED      |
| NAME: <u>C.I.P. DEMOS</u>                    | <input type="radio"/> 2. CLASSIFICATION CHANGED TO: _____        |
| 2ND REVIEW-DATE: <u>2-25-94</u>              | <input type="radio"/> 3. CONTAINS NO DOE CLASSIFIED INFO         |
| AUTHORITY: <u>ADD</u>                        | <input type="radio"/> 4. COORDINATE WITH: _____                  |
| NAME: <u>J.R.A.</u>                          | <input type="radio"/> 5. CLASSIFICATION CANCELLED                |
|  | <input type="radio"/> 6. CLASSIFIED INFO BRACKETED               |
|  | <input type="radio"/> 7. OTHER (SPECIFY): <u>PAGES 2 THRU 34</u> |

ARE DENIED IN THEIR ENTIRETY.

Reviewed by: R.J. [Signature]  
(Name)  
Div [Signature]  
(Title)  
2/18/91  
(Date)

~~RESTRICTED DATA~~  
This document contains Restricted Data as defined in the Atomic Energy Act of 1954. Unauthorized disclosure is subject to Administrative and Criminal Sanctions.

LARGE-SCALE INTEGRATED DESTRUCT SYSTEM

*George T. Schmitz  
C. Art Campos  
Jack R. Anthony  
Thomas O. Meyer*

FEBRUARY 1991

for

Sandia National Laboratories  
Albuquerque, New Mexico  
P. O. Nos. 52-2235 and 37-9619

ABSTRACT



DOE  
b(3)

~~CONFIDENTIAL~~

Pages 2 + Area 34  
are CRD per  
[unclear]

DOE  
b(3)

~~CONFIDENTIAL~~



~~CONFIDENTIAL~~

DOE  
b(3)

~~CONFIDENTIAL~~

~~CONFIDENTIAL~~

DOE  
b(3)

~~CONFIDENTIAL~~

~~CONFIDENTIAL~~

JOE  
b(3)

~~CONFIDENTIAL~~

~~CONFIDENTIAL~~

DOE  
b(3)

~~CONFIDENTIAL~~



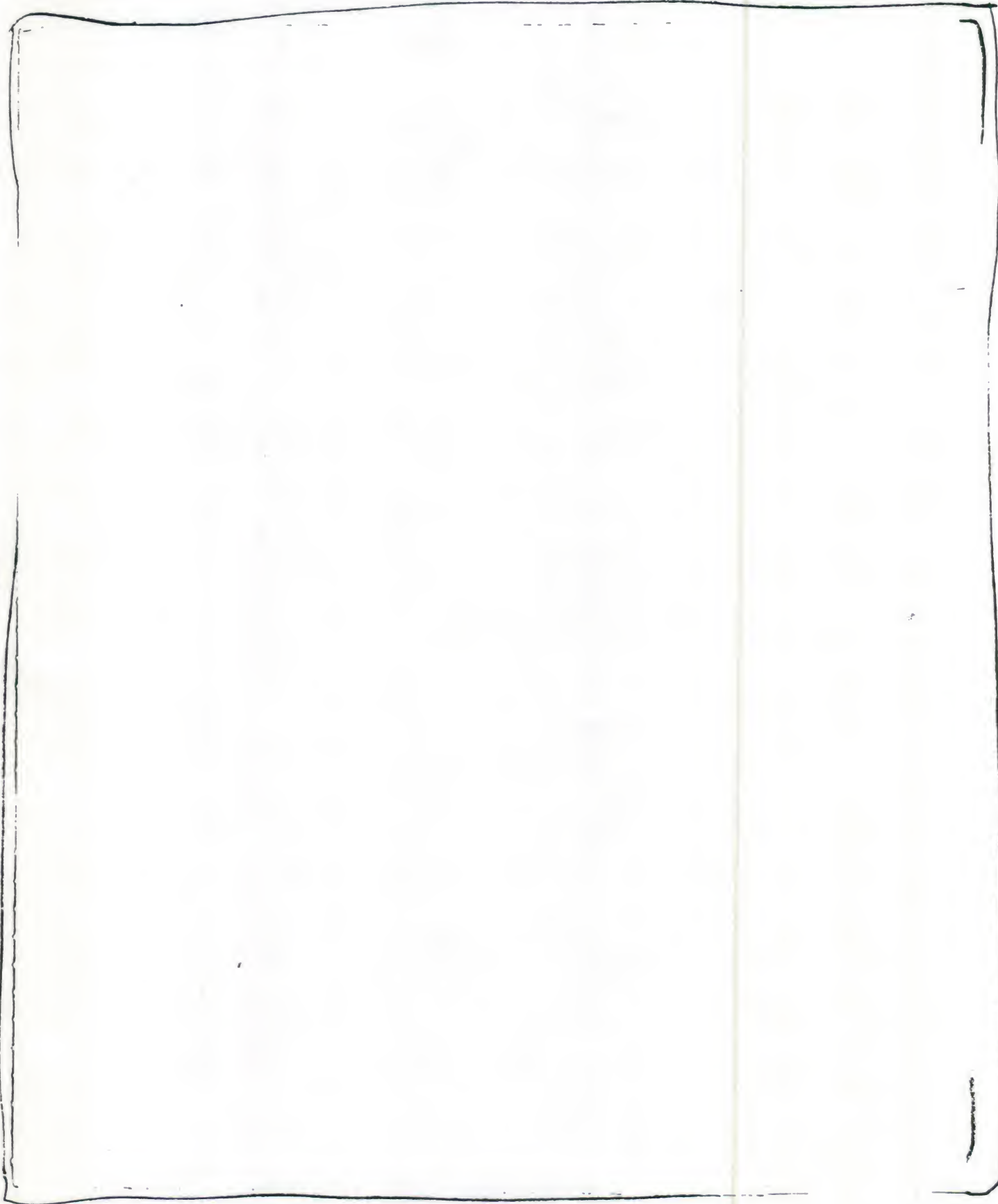
DOE  
b(3)

~~CONFIDENTIAL~~

JOE  
b(3)

~~CONFIDENTIAL~~

~~CONFIDENTIAL~~



JOE  
b(3)

~~CONFIDENTIAL~~

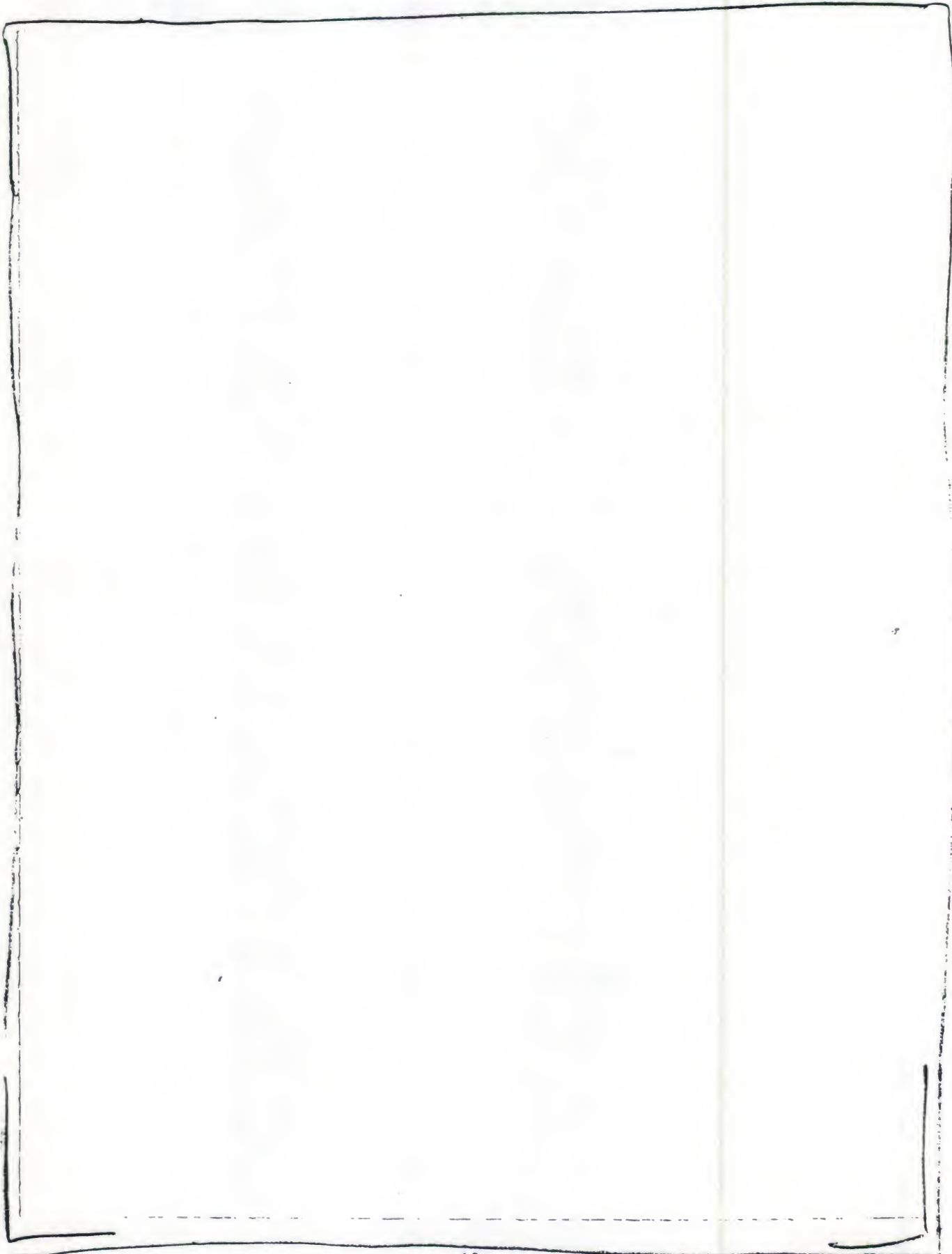
~~CONFIDENTIAL~~

JOE  
b(3)

~~CONFIDENTIAL~~

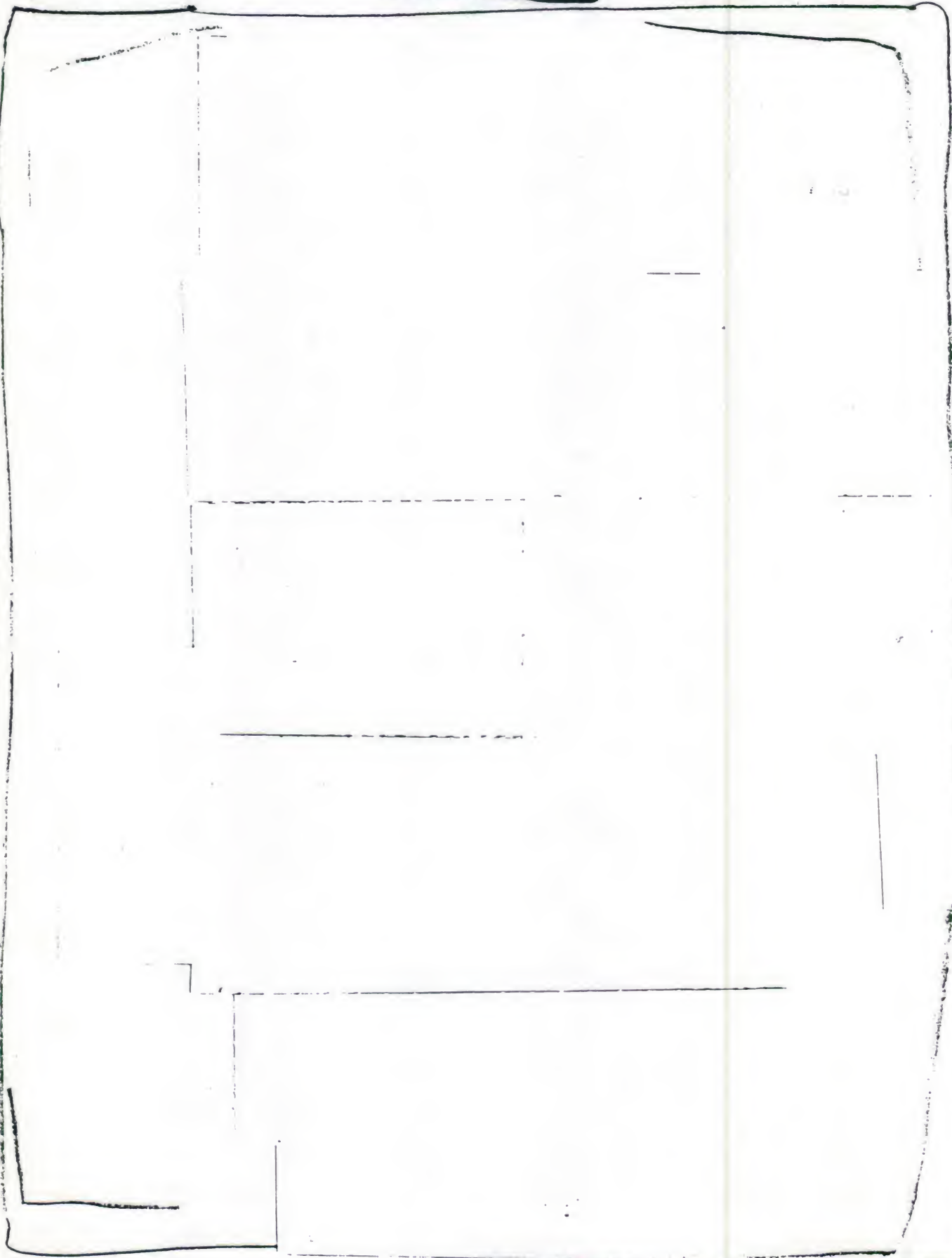
DOE  
b(3)

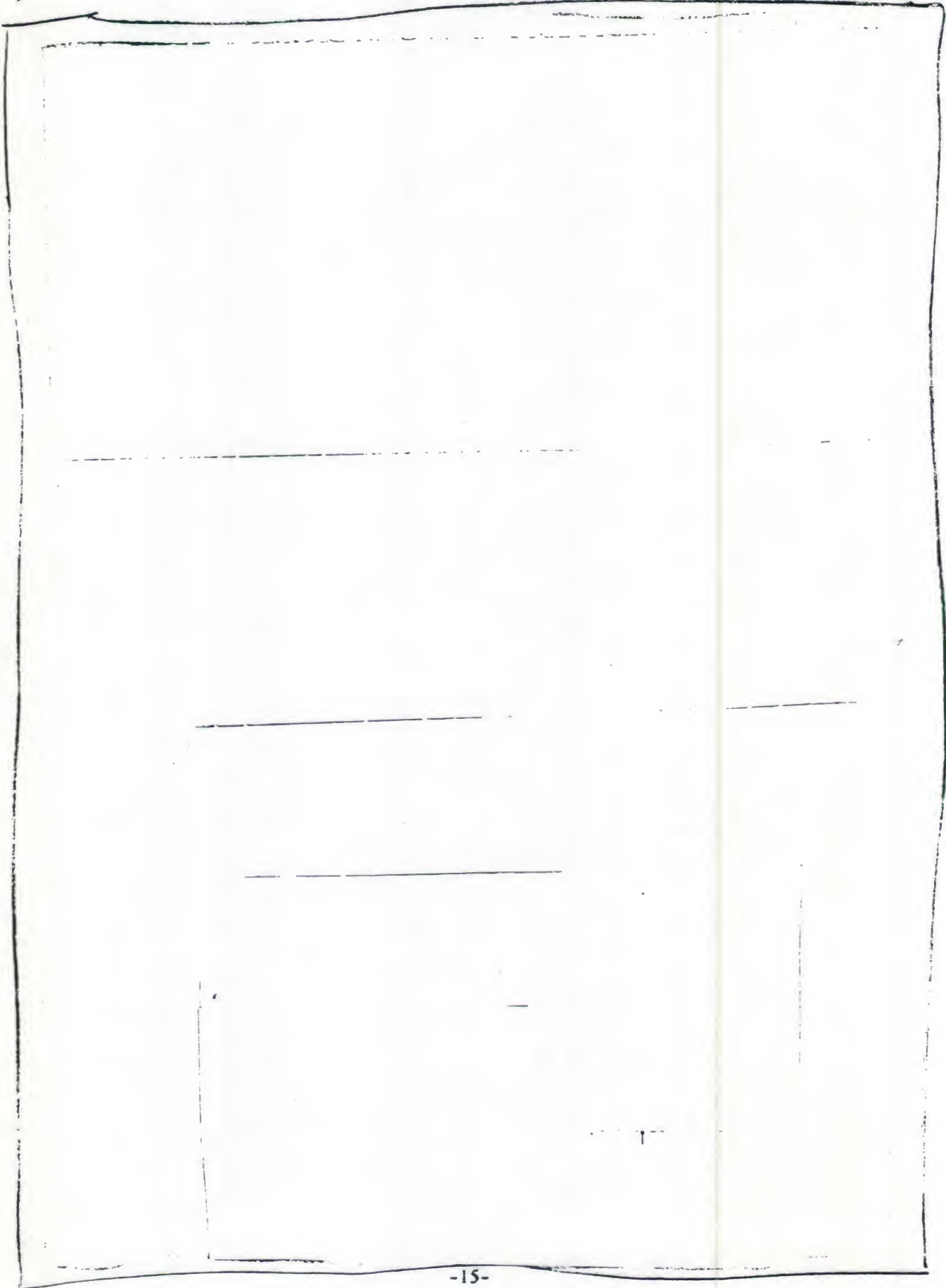




DOE  
b(3)

DOE  
b(3)





JOE  
b(3)

~~CONFIDENTIAL~~

DOE  
b(3)

~~CONFIDENTIAL~~

~~CONFIDENTIAL~~

Doc  
b(3)

~~CONFIDENTIAL~~



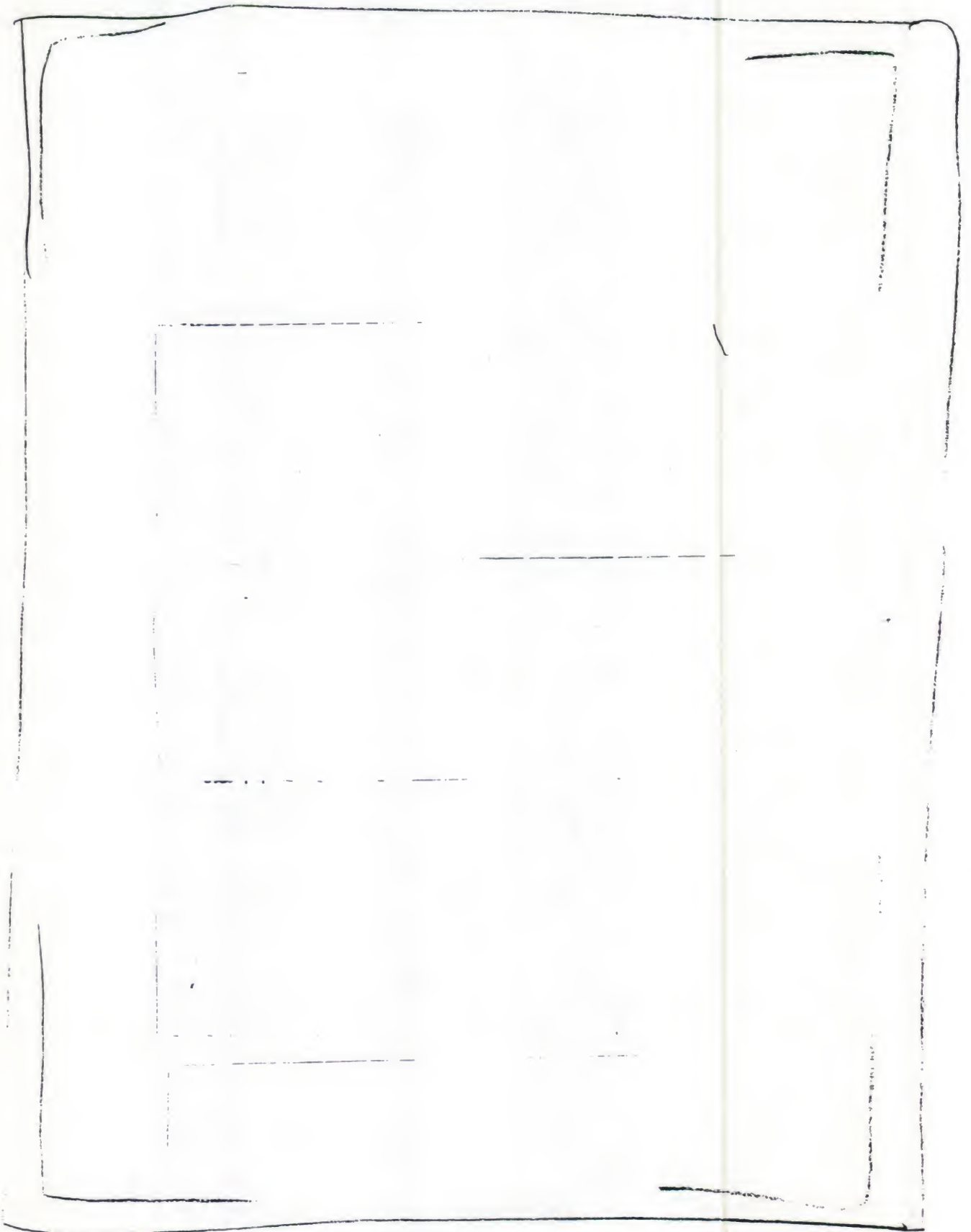
JOE  
b(3)

~~CONFIDENTIAL~~

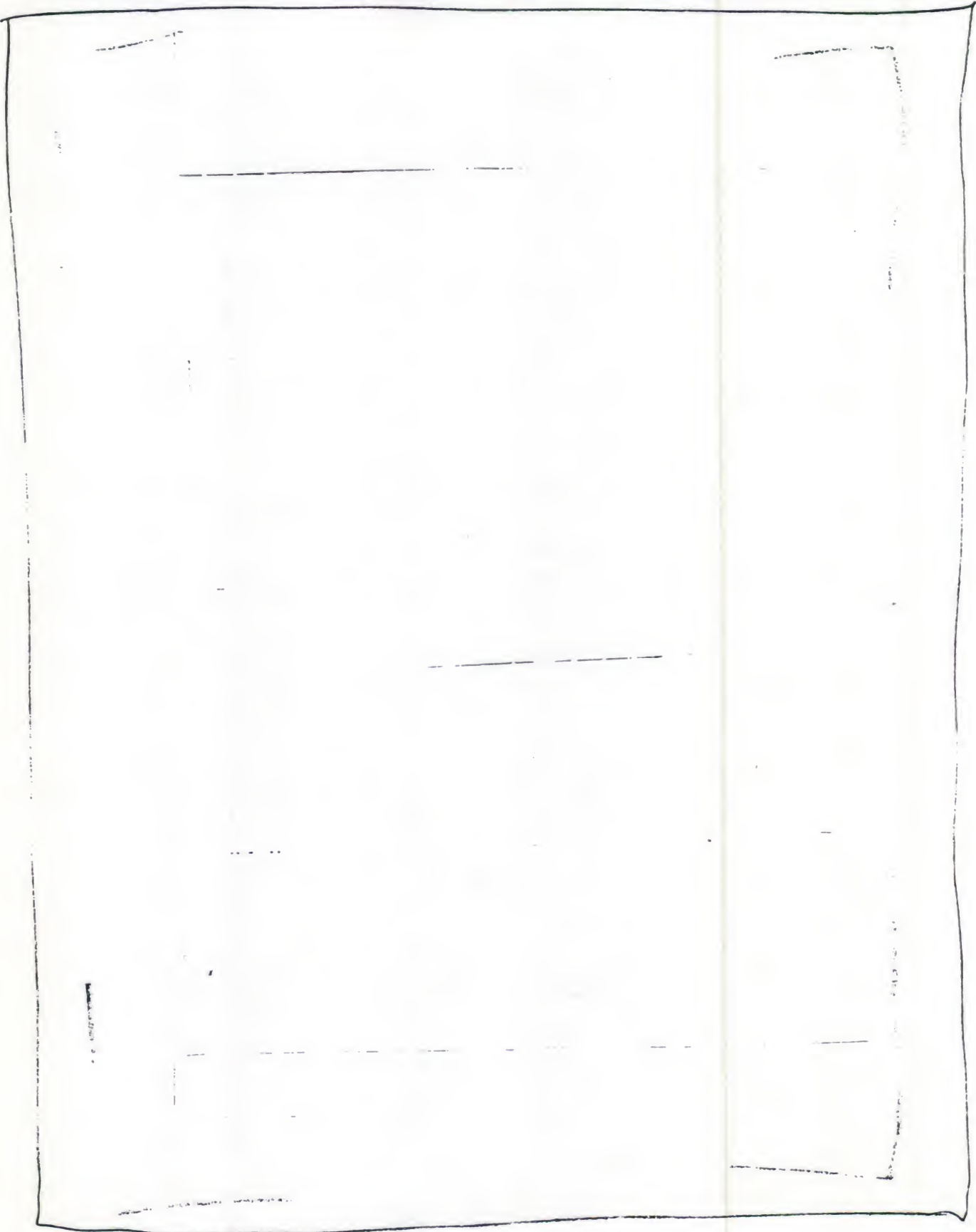
✓  
b(3)

~~CONFIDENTIAL~~

DOE  
b(3)



DOE  
b(3)



DoE  
b(3)

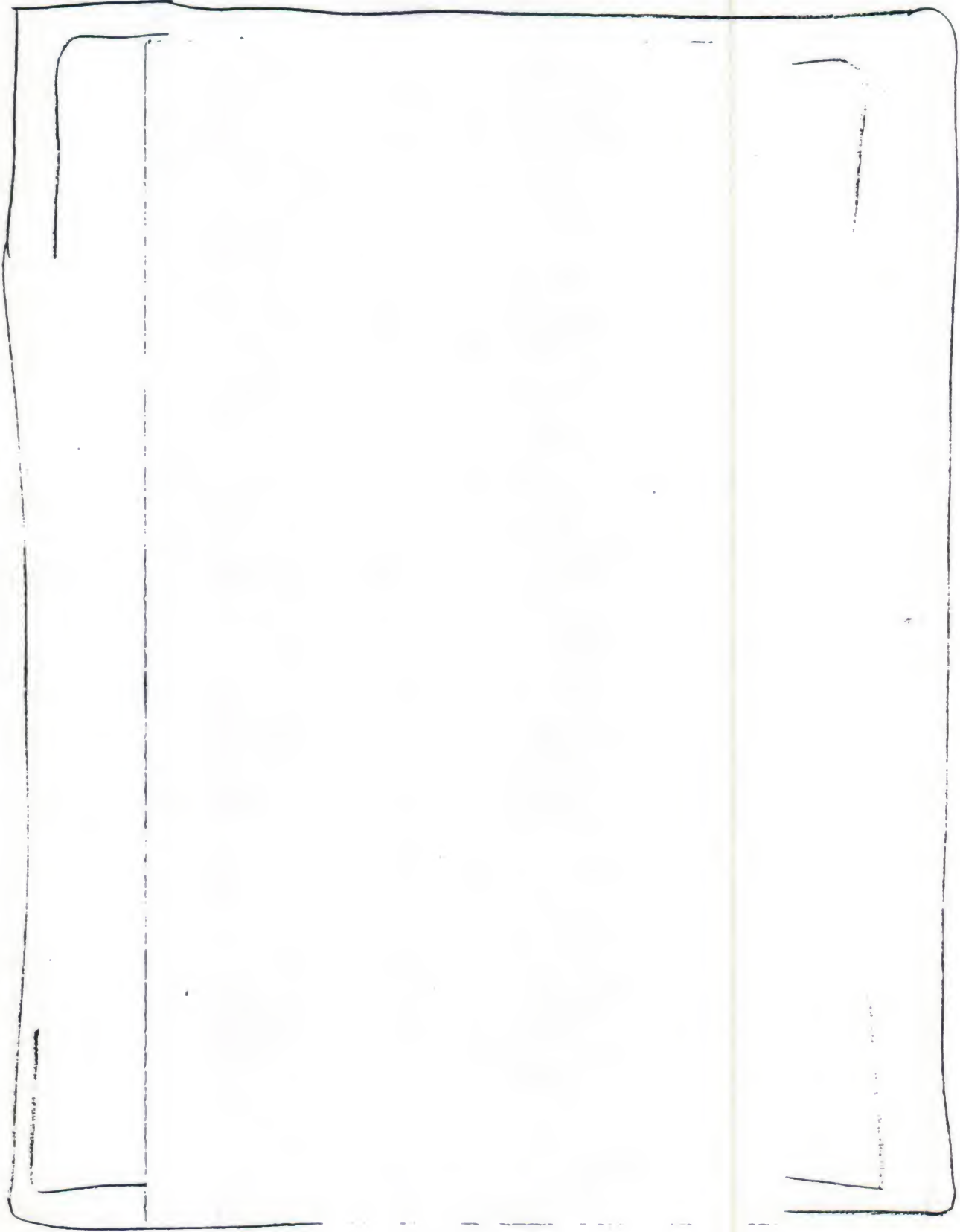


~~CONFIDENTIAL~~

JOE  
b(3)

~~CONFIDENTIAL~~ 25

DOE  
b(3)

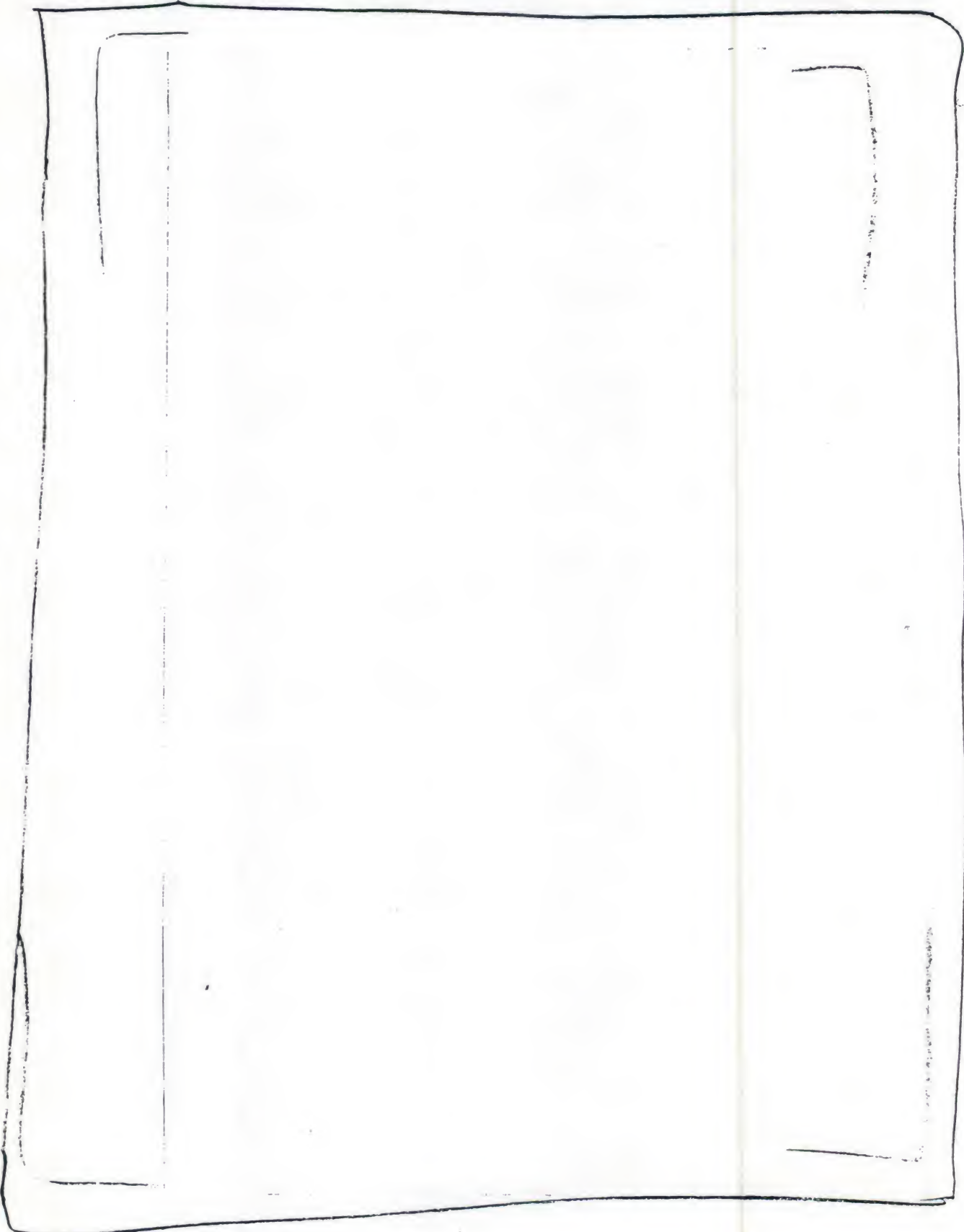


~~CONFIDENTIAL~~

DOE  
b(3)

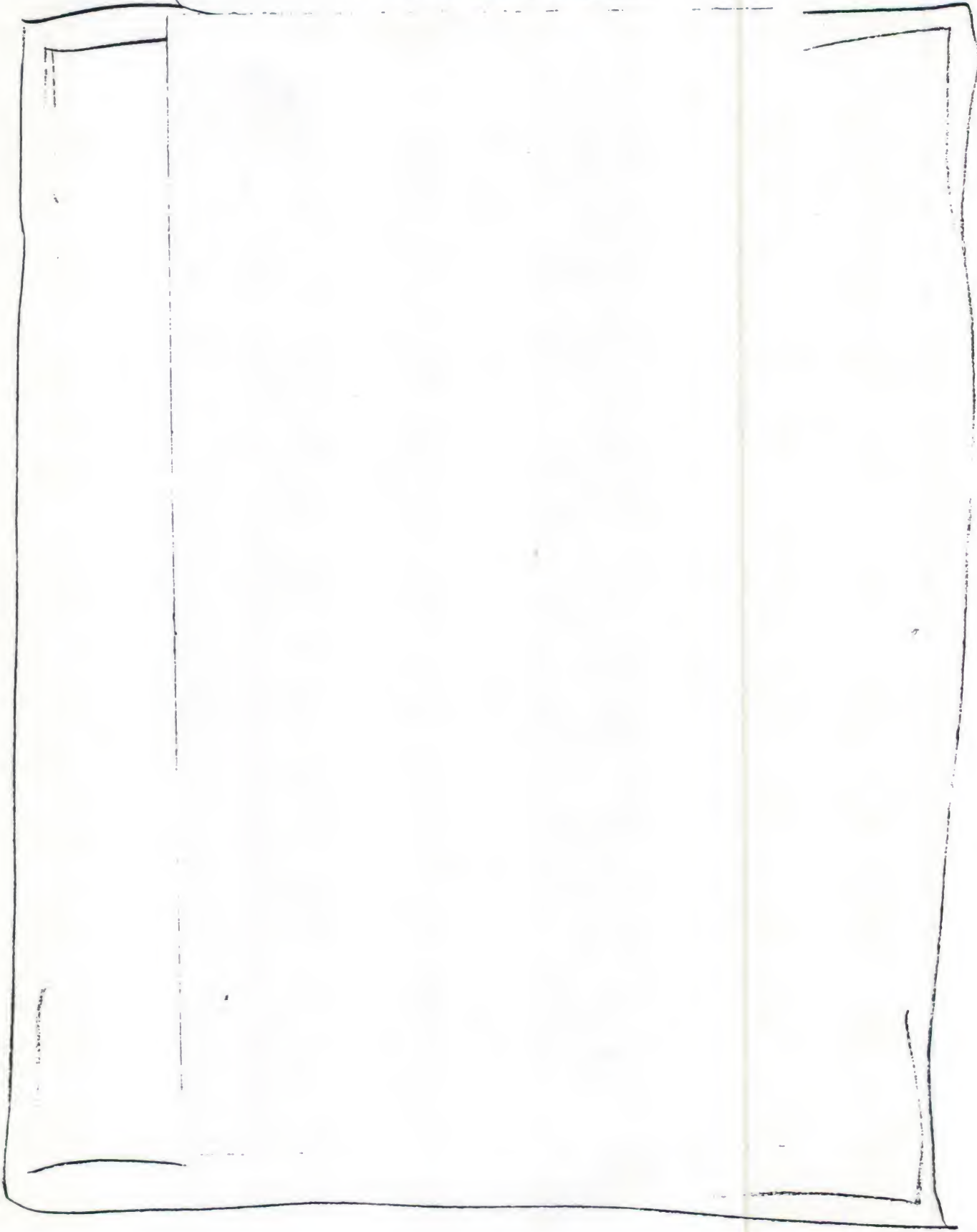
~~CONFIDENTIAL~~

~~CONFIDENTIAL~~



DOE  
b(3)

~~CONFIDENTIAL~~



DOK  
b(3)



~~CONFIDENTIAL~~

JOE  
b(3)

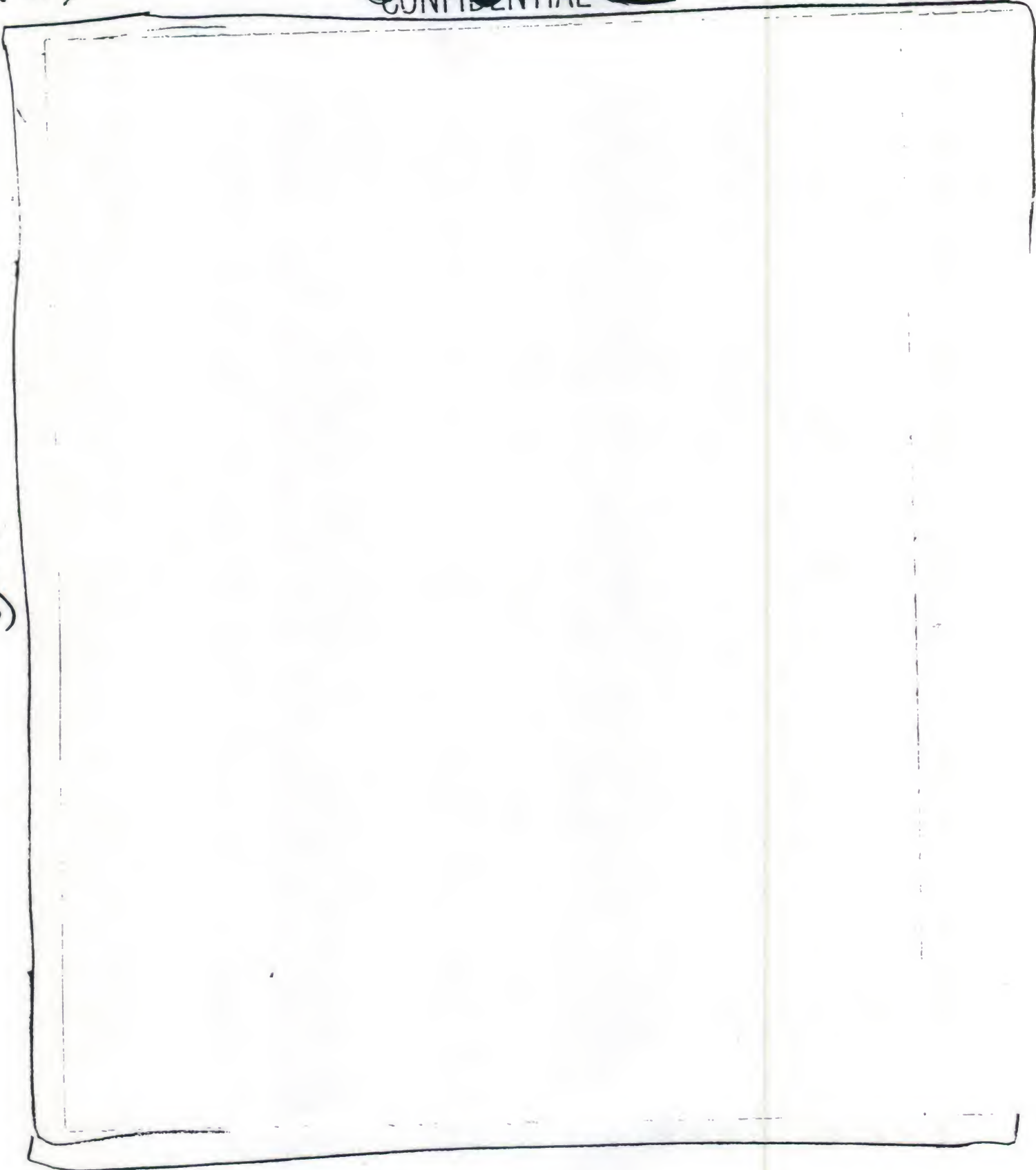
~~CONFIDENTIAL~~

~~CONFIDENTIAL~~

DOE  
b(3)

~~CONFIDENTIAL~~

~~CONFIDENTIAL~~



DOE  
b(3)

~~CONFIDENTIAL~~

~~CONFIDENTIAL~~

DOE  
b(3)

~~CONFIDENTIAL~~

~~CONFIDENTIAL~~

JOE  
b(3)

~~CONFIDENTIAL~~



~~CONFIDENTIAL~~

DOE  
b(3)

~~CONFIDENTIAL~~

~~CONFIDENTIAL~~

DISTRIBUTION

*This page may  
be released.  
RPH  
7-25-94*

DEPARTMENT OF ENERGY - WASHINGTON, DC

Director of Weapons Production  
Office of Military Application

DEPARTMENT OF ENERGY - AL

Technical Information Officer, IPS  
Plans and Programs Branch  
Weapons Quality Division  
Program Manager(2)  
Production Operations Division  
Office of Environment, Safety and Health  
Development and Integration  
Weapon Programs Division

DEPARTMENT OF ENERGY - AAO

Area Manager

OFFICE OF SCIENTIFIC AND TECHNICAL  
INFORMATION - OAK RIDGE, TN

(2)

LAWRENCE LIVERMORE NATIONAL LABORATORY

L-53  
L-125  
L-282 (6)  
L-328  
L-368

LOS ALAMOS NATIONAL LABORATORY

M-1 (5)  
M-9  
WX-1  
WX-3  
WX-11  
WX-DO  
M-DO  
ISD-4

SANDIA NATIONAL LABORATORIES - ALBUQUERQUE

Org. 2500  
Org. 2512  
Org. 3141  
Org. 5100

SANDIA NATIONAL LABORATORIES - LIVERMORE

Org. 8286

EG&G MOUND APPLIED TECHNOLOGIES

Manager, Product and Process Development

SAVANNAH RIVER LABORATORY

Program Manager, Defense Waste Processing  
Section, 773-A

MASON & HANGER - PANTEX

Development Division (5)  
Environment, Safety and Health Division  
Assembly Division  
Fabrication Division (3)  
Program Management Division  
Quality Division

Circulation Copy:

1. Plant Manager, 12-36
2. Mason & Hanger, Lexington

Technical Library

File (5)

ALLIED-SIGNAL INC. - KANSAS CITY PLANT

Material Engineering

Please refer any distribution changes to  
A. V. Lucero, Publications Section FTS 477-3535.

~~CONFIDENTIAL~~